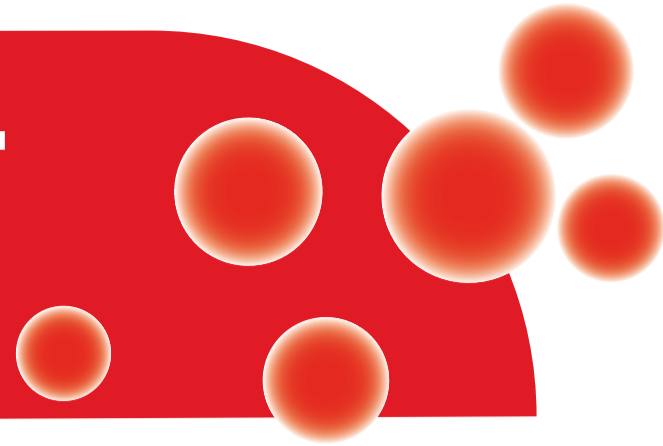


iTRANSFUSEFACTSHEET

all about blood



WHAT DOES PLASMA GET USED FOR?

Plasma is often called liquid gold. It is made into 17 different products to help patients with trauma, burns, cancer and blood diseases. Donors can give plasma once a fortnight, or as part of a whole blood donation, once every three months.

THE BLOOD SERVICE PRODUCES THREE PLASMA PRODUCTS

Clinical plasma (FFP)

Helps treat patients with major bleeding. Reasons for bleeding may include trauma, medication, or liver disease.

Cryoprecipitate

This can be thought of as blood glue. 'Cryo' contains clotting factors that help patients who lack these factors.

Cryo-depleted plasma

A life-saving product for patients with Thrombotic Thrombocytopenic Purpura (TTP), a rare condition that causes excessive blood clots and bleeding at the same time. One TTP patient can require hundreds of plasma transfusions.

CSL BIOTHERAPIES PRODUCES 14 PRODUCTS USING PLASMA FROM BLOOD DONORS

Intravenous Immunoglobulin IVIg (INTRAGAM® P)

Used to replace antibodies to help prevent infections and also used in the treatment of some immune, blood and neurological disorders. Made in two vial sizes.

200 mL vial = 7.8 blood donations or 3.5 plasma donations

Albumin (ALBUMEX® 4)

For treatment of patients suffering from shock due to blood loss, during heart-lung bypass surgery and plasma exchange.

500 mL vial = 2.7 blood donations or 1.2 plasma donations

Albumin (ALBUMEX® 20)

A stronger concentration of Albumin used when the levels of albumin in blood is low.

100 mL vial = 2.8 blood donations or 1.2 plasma donations

Factor IX concentrate (MonoFIX®-VF)

Used to treat people with the inherited bleeding condition haemophilia B.

500 IU vial = 31.1 blood donations or 13.9 plasma donations

Antithrombin concentrate (THROMBOTROL®-VF)

Helps prevent blood clots in patients with an inherited deficiency of antithrombin. Most commonly used at times of surgery and childbirth.

1000 IU vial = 20.1 blood donations or 9.0 plasma donations

Prothrombin complex concentrate (PROTHOMBINEX®-VF)

Helps stop severe bleeding – due to warfarin (a blood-thinning medication) for example.

500 IU vial = 9.5 blood donations or 4.2 plasma donations

Factor VIII and VWF concentrate (BIOSTATE®)

Treats patients with haemophilia A and von Willebrand disease.

500 IU vial = 13.7 blood donations or 6.1 plasma donations

Rh(D) Immunoglobulin-VF

Also known as anti-D. Used to prevent haemolytic disease of the newborn in babies, which can result in serious health problems for the baby or even a miscarriage. 17% of Australian mothers will need injections of anti-D.

625 IU vial = 0.1 blood donations or 0.04 plasma donations

Hepatitis B Immunoglobulin-VF

For passive immunisation against hepatitis B.

400 IU vial = 0.04 blood donations or 0.16 plasma donations

Zoster Immunoglobulin-VF

Is used for the prevention of chicken pox and shingles in people with weakened immune systems, such as patients with leukaemia, lymphoma, and immunodeficiency.

200 IU vial = 0.3 blood donations or 0.1 plasma donations

CMV Immunoglobulin-VF

Used to prevent CMV infection in patients undergoing bone marrow and organ transplants.

1.5 MU vial = 2.9 blood donations or 1.3 plasma donations

Intramuscular Immunoglobulin (Normal Immunoglobulin-VF)

Used for passive immunisation against hepatitis A, measles and poliomyelitis.

5 mL vial = 0.7 blood donations or 0.3 plasma donations

Tetanus Immunoglobulin-VF (for IM use)

Used for passive immunisation against tetanus.

250 IU vial = 0.3 blood donations or 0.1 plasma donations

Tetanus Immunoglobulin-VF (for IV use)

Used in treating tetanus.

4000 IU vial = 4.2 blood donations or 1.9 plasma donations

The information contained in this fact sheet is not intended to be medical or professional advice. The disclaimer found at transfusion.com.au applies to this fact sheet.

For more information visit transfusion.com.au

 Australian Red Cross
BLOOD SERVICE

